



<i>The Classical Academy</i>	<i>Policies and Procedures</i>
Policy Name:	TCA College Pathways Athletic/Activities Participation at TCA Traditional Full-Time Schools
Policy Number:	IGDJ-TCA-P1
Original Date:	1/1/2014
Last Reviewed:	8/8/2022
Category:	Athletics and Activities
Author:	Director of Academic Services
Approval:	Director of Academic Services

## INTRODUCTION

### Background

- ❖ College Pathways, as a blended—hybrid program, is not a comprehensive secondary school.
- ❖ College Pathways does not offer athletics, performing arts, or Colorado High School Sports and Activities (CHSAA) sanctioned activities.
- ❖ By CHSAA by-law a co-op opportunity exists between two member CHSAA member schools. CHSAA member schools must have a recognized separate athletic or activity program with a minimum of one sport offered. College Pathways is not a CHSAA member school – but rather a school without a program. Co-op, as requested by some in the TCA community in the past, is therefore not an option between TCA High School and TCA College Pathways.
- ❖ TCA and Academy School District 20 (ASD20) have defined guidelines for managing placement of College Pathways students who wish to participate in activities (reference this policy and TCA school handbooks). These protocols are embedded in ASD20 Policies IGDJ, IGDJ-R, IGDJ-E and apply to all secondary grade levels (7<sup>th</sup>-12<sup>th</sup> grade).

### CHSAA Athletics and Activities

- ❖ Students who attend College Pathways may participate in CHSSA interscholastic athletics and activities according to the placement protocols developed by ASD20.
  - Students at College Pathways may be eligible to participate in TCA North traditional full-time athletics/activities programs under three exception areas: prior rostering, sibling rule, and parental preference request.
  - In each of the alternate scenarios detailed above students must complete a “Request for Participation” form at ASD20 to be assigned to a TCA traditional sport/activity if participating outside of the normal traditional program (i.e. students transferring to College Pathways after rostering, sibling exceptions, or parental preference)
- ❖ Joint TCA/ASD20/CHSAA protocols explicitly assign College Pathways students who previously made the roster of a high school team at TCA to continue participating at TCA for all activities offered by TCA (this exclusion, according to ASD20, also applies to 7<sup>th</sup> and 8<sup>th</sup> grade students at College Pathways that have previously rostered in TCA’s traditional junior high program). “Rostered” means the student was named a high school or junior high team member by the coach. This exception requires that the student in question has been a student in the full-time, traditional program before transferring to College Pathways.
  - ASD20 required, as a condition of approval of College Pathways initial application, that an athlete who begins to compete in high school at TCA will complete their athletic career at TCA in all sports offered by TCA.

- The exception detailed above applies to the junior high and high school separately. The schools are treated as distinct entities. Rostering in the junior high traditional program and then transferring to College Pathways would only apply while the student is in junior high. Once the student has transitioned to high school then ADS20 policy IGDJ R would apply and the student would complete a new “Request for Participation” form to participate within the guidance listed previously (sibling rule or parental preference).
- ❖ Siblings of students currently assigned to compete at TCA high school or junior high (separate and distinct) by ASD20 are also assigned to participate at TCA for all activities offered at TCA in those schools, unless their parents elect to enter the ASD20 placement system (neighborhood school or lottery, as appropriate).
  - The sibling rule applies to junior high and high school separately. A student rostered in a sport at junior high influences assignment of his/her siblings in junior high for the purposes of this policy and students rostered in high school would influence siblings in high school.
- ❖ See ASD20 policy IGDJ-R and IGDJ-E for specifics but the general guidelines for school assignment is as follows: (1) previously assigned school of participation, (2) school of residence for those who reside within Academy District 20, (3) lottery/rotation process – the student will be assigned to a school of participation on a rotation basis (which would include TCA students in a separate lottery assignment for parents requesting TCA preference – see excerpt from ADS20 IGDJ R section 3 below). [\[Click here to see Policy IGDJ-R.\]](#)
  - If a student attends the College Pathways School at The Classical Academy charter school, he or she may request to participate in the desired sport at The Classical Academy. If the number of such requests is greater than the number of roster spots available for the desired sport, the district athletics secretary and his/her supervisor will conduct lottery drawings to determine assignment to the desired sport at The Classical Academy. Lottery drawings are held on the same dates as the rotation assignments identified below (*see IGDJ R*). The Classical Academy shall not receive an assignment that will result in The Classical Academy receiving three or more assignments more than any other high school in Academy District 20. Only students attending the College Pathways are considered for athletic assignment to The Classical Academy. If a student requests to participate in a sport at The Classical Academy and is not granted the request, then the student is assigned to the Academy District 20 neighborhood school (if a resident of the district) or is assigned through the rotation process (if not a resident of the district).
- ❖ Co-curricular activities (those directly associated with participation in a curricular class) and extra-curricular (those after school or other activities that do not require a class component) must be addressed separately.
- ❖ Co-curricular activities may be available for CP students to participate in at another campus but the student must be able to commit to the existing class schedules and course requirements. Interested students must follow the ASD20 “Request for Participation” process.
- ❖ Extra-curricular activities, should they fit into a student’s schedule, either during school or after school, would be acceptable venues for CP participation with the following stipulation. Should the number of students from CP participating in an extra-curricular activity reach numerical levels that cause classroom management issues, then consideration should be given to creating a separate activity for the CP students.

### **Non-CHSAA Activities**

- ❖ Non-CHSAA regulated school-sponsored activities, such as Theatre and Color Guard, are available to College Pathways students at the TCA North Campus. College Pathways students

must meet the same qualification and tryout requirements for students at TCA High School and TCA Junior High School.

- ❖ It is important to note that in those areas not regulated by Colorado law, CHSAA regulations, or ASD20 policy, or TCA policy, it is the intent of TCA to allow students at College Pathways to jointly participate in programs offered at other TCA campuses. An exception is student organizations.
- ❖ Per Policy TCA-JJA, all student groups meeting on school premises shall be open to and limited to all students currently enrolled in the sponsoring school on a voluntary basis.

### **Procedures - Summary**

- ❖ If a student attending a junior high or high school (such as College Pathways) that does not offer athletics, or extra-curricular/co-curricular activities such as band, choir, or speech programs, wishes to participate in said athletics/activities within ASD20, that student must apply for athletic/activities participation placement through the ASD20 central office.
  - Typically, ASD20 resident students who have never been placed on a high school or junior high team roster will participate at their neighborhood school.
  - Junior high or middle school participation does not determine high school placement.
  - Students who have previously been placed on a team roster at a public high school or junior high (including The Classical Academy) will continue to participate at that school. Junior high and high school are distinct and separate entities and previous team rosters only applies to the applicable junior high or high school, it does not carry over between the two.
  - Sibling rule exceptions, as discussed above, must be assigned through the ASD20 "Request for Participation" process.
  - Parent preference requests, as discussed above, must be assigned through the ASD20 "Request for Participation" process.
  - Non-ASD20 resident students who have never been placed on an ASD20 high school or junior high team roster will participate at a school assigned through the ASD20 placement lottery/rotation process.
  - College Pathways students who wish to participate in athletics or activities as described above must indicate their interest by completing a Request for Participation form available from the ASD20 Education and Administration (ASD20 policy IGDJ R).

TCA accepts ASD20 Policies IGDJ, IGDJ-R, and IGDJ-E and those three policies supersede this Policy IGDJ-TCA-P1. TCA outlines the ASD20 policies and procedures within this policy with the sole purpose of maintaining good communication with the TCA College Pathways community.

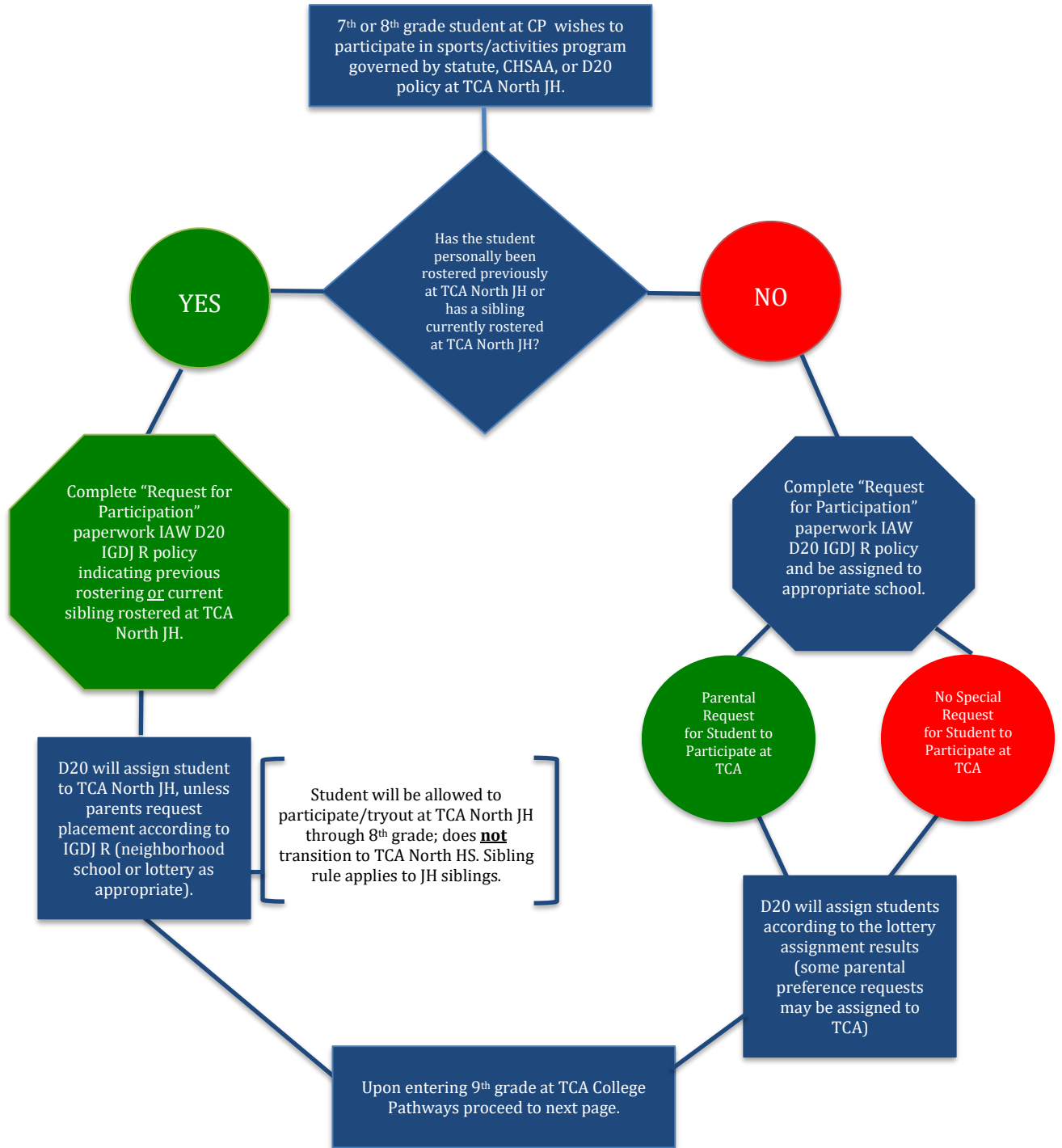
### **Cross References:**

C.R.S. § 22-32-116.5 Extracurricular and interscholastic activities  
C.R.S. § 22-32-104.5 (6)(b)(I) Home-based education  
CHSAA bylaws  
ASD20 IGDJ High School Athletic Programs  
ASD20 IGDJ R Assignment of Athletes to Schools for Participation  
ASD20 IGDJ E High School Athletic Program – Assignment Flowchart  
JJA-TCA Student Organizations  
JJA-R-TCA Student Organizations Procedures

### **Policy Revision History**

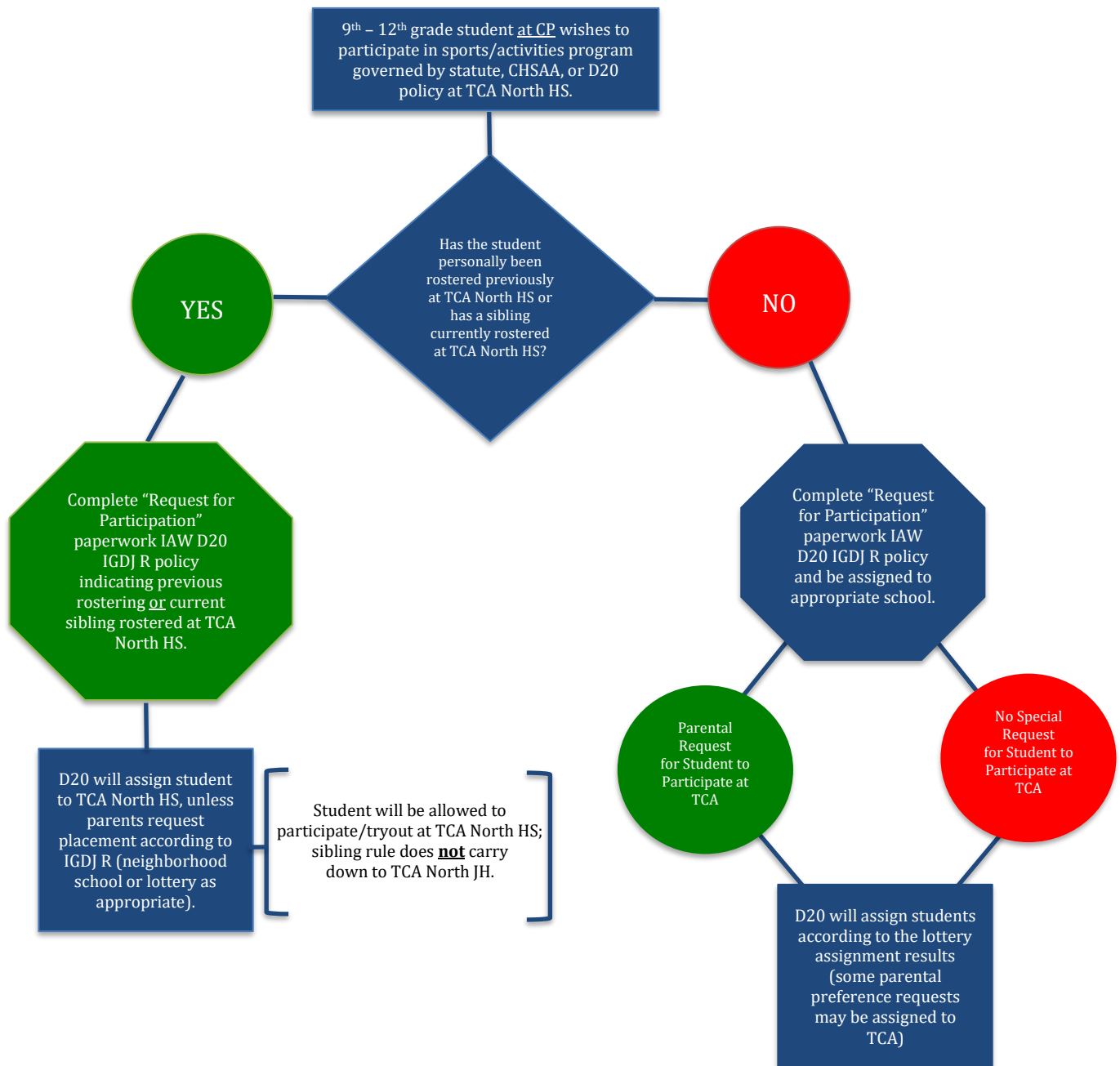
<b>Date</b>	<b>Revision Details</b>	<b>Revised By</b>
1/1/2014	Policy Created.	Director of Academic Services
8/19/2014	Completed annual review. Updated “parental preference” options.	Director of Academic Services
7/1/2019	Policy updated to reflect changes in ASD20 policies and CHSAA clarification.	Director of Academic Services
2/14/2020	Policy updated to be consistent with Policy JJA-TCA	Director of Academic Services
8/8/2022	Removed all references to TCA Cottage School Program Junior High	Director of Academic Services

## Decision Process Diagram for College Pathways (7<sup>th</sup>-8<sup>th</sup> Grade)



**NOTE:** the term “rostered” applies to any competitive regulated sport/activity

## Decision Process Diagram for College Pathways (9<sup>th</sup> – 12<sup>th</sup> Grade Students)



**NOTE:** the term “rostered” applies to any competitive regulated sport/activity